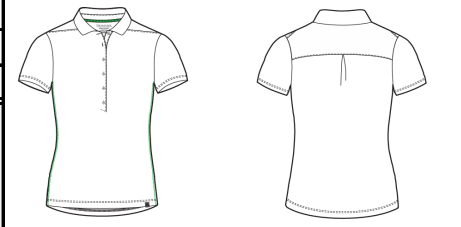


<b>Trimark Sportswear Group</b>	<b>Spec Sheet</b>	Proto#	W01-503B-S21	Style#	96313
---------------------------------	-------------------	--------	--------------	--------	-------

Program: <b>Elevate</b>	Season: <b>Spring 2021</b>	Status: <b>FINAL</b>	Vendor: <b>X</b>	Created: <b>10-Sep-2020</b>	Modified: <b>26-Nov-2020</b>
-------------------------	----------------------------	----------------------	------------------	-----------------------------	------------------------------

Description:



CODE	POM DESCRIPTION	Tol (+/-)	XS	S	M	XL	XL	2XL				
	Front body length - from HPS to CF hem @ shortest pt. (NOT including droptail)	1/2	25	25 1/2	26	26 3/4	27 1/2	28 1/4				
	Back body length - from HPS to CB hem @ longest pt. (including droptail)	1/2	26 1/2	27	27 1/2	28 1/4	29	29 3/4				
	Chest width - 1" below armhole, flat	1/2	17	18 1/4	19 1/2	21	22 1/2	24				
	Waist width	1/2	17 1/4	18 1/2	19 3/4	21 1/4	22 3/4	24 1/4				
	Hip width	1/2	18 5/8	19 7/8	21 1/8	22 5/8	24 1/8	25 5/8				
	Bottom width - flat	1/2	19 1/2	20 3/4	22	23 1/2	25	26 1/2				
	Hem height - hem edge to top row of stitch	1/8	3/4	3/4	3/4	3/4	3/4	3/4				
	Sleeve overarm - fr CB nk straight across to shoulder pt to slv hem - 3 pt measure - SHORT	1/2	14	14 1/2	15	15 5/8	16 1/4	16 7/8				
	Sleeve hem height - hem edge to top row of stitch	1/8	7/8	7/8	7/8	7/8	7/8	7/8				
	Collar back height (CB from collar stand seam to collar edge) 2 piece collar	1/8	1 7/8	1 7/8	1 7/8	1 7/8	1 7/8	1 7/8				
	Collar point length	1/8	2 1/4	2 1/4	2 1/4	2 1/4	2 1/4	2 1/4				
	CF placket length - from CF neck seam to bottom of placket opening	1/8	11 3/8	11 3/8	11 3/8	11 3/8	11 3/8	11 3/8				
	CF placket width - edge of placket to outside stitch	1/8	5/8	5/8	5/8	5/8	5/8	5/8				
	Back yoke height - from center back neck seam to yoke seam	1/8	5 1/4	5 3/8	5 1/2	5 5/8	5 3/4	5 7/8				
	Shirttail / Droptail - hem edge at CF to hem edge at CB	1/8	1 1/2	1 1/2	1 1/2	1 1/2	1 1/2	1 1/2				