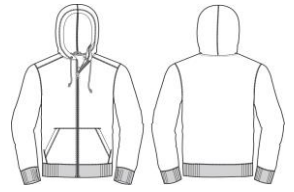


Trimark Sportswear Group		Spec Sheet			Proto#	M05-065-S18	Style#	18135 (PF# 38223)				
Program:	Elevate	Season:	Spring 2018	Status:	JPP	Vendor:	Created:	2016-11-17	Modified:	14-Nov-17		
Description: Men's CYPRESS Fleece Fzip Hoody												



CODE	POM DESCRIPTION	Tol (+/-)		XS	S	M	L	XL	2XL	3XL	4XL	5XL
	Body length - from HPS to CB hem	1/2		28 1/4	28 3/4	29 1/4	30	31	32	33	34	35
	Chest width - 1" below armhole, flat	1/2		20	21 1/4	22 1/2	24	25 1/2	27	29	31	33
	Bottom width at bottom edge of band - hem edge to edge, flat - RIB	1/2		17 1/2	18 3/4	20	21 1/2	23	24 1/2	26 1/2	28 1/2	30 1/2
	Body band height - hem edge to body seam - RIB	1/8		3 1/4	3 1/4	3 1/4	3 1/4	3 1/4	3 1/4	3 1/4	3 1/4	3 1/4
	Sleeve overarm - fr CB nk to shoulder point and to sleeve hem - 3 pt measure	1/2		35	36	37	38	39	40	41	41 3/4	42 1/2
	Cuff height - hem edge to sleeve seam - RIB	1/8		3 1/4	3 1/4	3 1/4	3 1/4	3 1/4	3 1/4	3 1/4	3 1/4	3 1/4
	Hood height at CF	1/4		15	15	15 1/2	15 1/2	15 1/2	15 1/2	15 1/2	16	16
	Hood width - at widest point	1/4		10	10 1/4	10 1/4	10 1/2	10 1/2	10 3/4	10 3/4	11	11
	Kanga pocket height at center	1/4		8 1/4	8 1/4	8 1/2	8 1/2	8 1/2	9	9	9 1/2	9 1/2
	Kanga pocket width at top - total width (right side to left side)	1/4		10 1/4	10 1/4	10 1/2	10 1/2	10 1/2	11	11	11 1/2	11 1/2
	Kanga pocket width at widest point - total width (right side to left side)	1/4		14 3/4	14 3/4	15	15	15	15 1/2	15 1/2	16	16
	Kanga pocket width at bottom - total width (right side to left side)	1/4		13 1/4	13 1/4	13 1/2	13 1/2	13 1/2	14	14	14 1/2	14 1/2