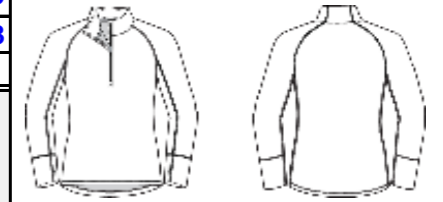


Trimark Sportswear Group				Spec Sheet				Proto# W05-154-F18		Style# 98305	
Program: Elevate		Season: Fall 2018		Status: OTP		Vendor: X		Created: 7-Mar-2018		Modified: 5-Apr-2018	
Description: Women's CRANE Knit Half Zip											



FOR INTERNAL USE ONLY (do not hide/ remove)
 Style ref:

CODE	POM DESCRIPTION	Tol (+/-)	XS	S	M	L	XL	2XL	3XL				
	Back body length - from HPS to CB hem @ longest pt. (including droptail)	1/2	27	27 1/2	28	28 3/4	29 1/2	30 1/4	31				
	Chest width - 1" below armhole, flat	1/2	17 3/4	19	20 1/4	21 3/4	23 1/4	24 3/4	26 1/4				
	Waist width	1/2	16 3/4	18	19 1/4	20 3/4	22 1/4	23 3/4	25 3/4				
	Hip width	1/2	18 1/4	19 1/2	20 3/4	22 1/4	23 3/4	25 1/4	27 1/4				
	Bottom width - flat	1/2	18 3/4	20	21 1/4	22 3/4	24 1/4	25 3/4	27 3/4				
	Hem height - hem edge to top row of stitch	1/8	3/4	3/4	3/4	3/4	3/4	3/4	3/4				
	Raglan sleeve overarm - fr CB nk to HPS and to sleeve hem - 3 pt measure	1/2	32	32 1/2	33	34	35	35 3/4	36 1/2				
	Cuff height - hem edge to sleeve seam	1/8	5 1/2	5 1/2	5 1/2	5 1/2	5 1/2	5 1/2	5 1/2				
	Collar height (top edge of collar to neck seam)	1/8	1 3/4	1 3/4	1 3/4	1 3/4	1 3/4	1 3/4	1 3/4				
	Centre front zipper opening (including garage)	0	12	12	12	12	12	12	12				
	Droptail - edge of CF hem to edge of CB hem	1/4	2	2	2	2	2	2	2				
	Zipper flap width		1 1/8	1 1/8	1 1/8	1 1/8	1 1/8	1 1/8	1 1/8				
	Overlocking stitch distance at top centre back collar		2 1/4	2 1/4	2 1/4	grade accordingly from L onwards							
	Overlocking stitch distance at centre back neck seam		3 1/8	3 1/8	3 1/8	grade accordingly from L onwards							