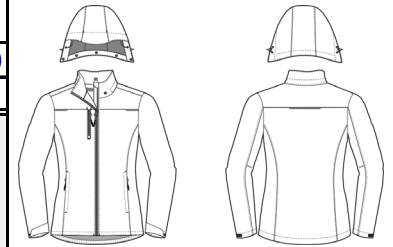


Trimark Sportswear Group		Spec Sheet			Proto#	W04-222-F19	Style#	99101			
Program:	Elevate	Season:	Fall 2019	Status:	Final	Vendor:	X	Created:	7-Dec-2018	Modified:	June 5th, 2019
Description:		Women's COLTON Fleece Lined Jacket									



CODE	POM DESCRIPTION	Tol (+/-)	XS	S	M	L	XL	2XL	3XL
	Front body length - from HPS to CF hem @ shortest pt. (NOT including droptail)	1/2	26 1/2	27	27 1/2	28 1/4	29	29 3/4	30 1/2
	Back body length - from HPS to CB hem @ longest pt. (including droptail)	1/2	28 1/2	29	29 1/2	30 1/4	31	31 3/4	32 1/2
	Forward shoulder	1/8	1	1	1	1	1	1	1
	Chest width - 1" below armhole, flat	1/4	19 1/2	20 3/4	22	23 1/2	25	26 1/2	28
	Waist width	1/4	18 1/4	19 1/2	20 3/4	22 1/4	23 3/4	25 1/4	27 1/4
	Hip width	1/4	20 1/2	21 3/4	23	24 1/2	26	27 1/2	29 1/2
	Bottom width - flat	1/4	21	22 1/4	23 1/2	25	26 1/2	28	30
	Hem height - hem edge to top row of stitch	1/8	1 1/8	1 1/8	1 1/8	1 1/8	1 1/8	1 1/8	1 1/8
	Sleeve overarm - fr CB nk to shoulder point and to sleeve hem - 3 pt measure	3/8	32 1/2	33	33 1/2	34 1/2	35 1/2	36 1/4	37
	Sleeve hem height - hem edge to top row of stitch	1/8	1 1/8	1 1/8	1 1/8	1 1/8	1 1/8	1 1/8	1 1/8
	Collar back height (top edge of collar to neck seam)	1/8	3 1/4	3 1/4	3 1/4	3 1/4	3 1/4	3 1/4	3 1/4
	Lower pockets length	1/8	7	7	7	7	7	7 1/4	7 1/4
	Chest pocket length From Yoke seam to btm of garage	1/8	5 1/2	5 1/2	5 1/2	5 1/2	5 1/2	5 1/2	5 1/2
	Zipper flap width	1/8	1 1/4	1 1/4	1 1/4	1 1/4	1 1/4	1 1/4	1 1/4
	Hood height	1/8	12 1/4	12 1/2	12 3/4	12 3/4	12 3/4	12 3/4	12 3/4
	Hood width - mid point	1/8	10 1/4	10 3/8	10 1/2	10 3/4	11	11 1/4	11 3/8
	Droptail - edge of CF hem to edge of CB hem	1/4	2	2	2	2	2	2	2
	Front Yoke Height from HSP to Yoke Seam		4 3/4	4 7/8	5	5 7/24	5 3/8	5 4/7	5 2/3
	Back Yoke height from CB neck seam to yoke seam		4 3/4	4 7/8	5	5 1/6	5 1/8	5 5/16	5 7/16