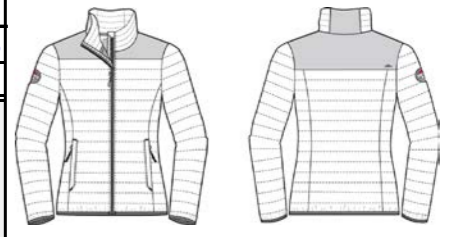


|  |  |  |  |                          |  |  |  |                             |  |                              |  |
|--|--|--|--|--------------------------|--|--|--|-----------------------------|--|------------------------------|--|
| <b>Trimark Sportswear Group</b>                            |  |  |  | <b>Spec Sheet</b>        |  |  |  | Proto# <b>W04-168-F18</b>   |  | Style# <b>99812</b>          |  |
| Program: <b>Roots73</b>                                    |  |  |  | Season: <b>Fall 2018</b> |  |  |  | Status: <b>Final</b>        |  | Vendor: <b>X</b>             |  |
| Description: <b>Women's BEECHRIVER Roots73 Down Jacket</b> |  |  |  |                          |  |  |  | Created: <b>Dec 8, 2017</b> |  | Modified: <b>25-May-2018</b> |  |



**FOR INTERNAL USE ONLY** (do not hide/ remove)  
Style ref:

| CODE | POM DESCRIPTION  | Tol (+/-) | XS      | S        | M      | L      | XL     | 2XL    | 3XL    |  |  |  |
|------|--|-----------|---------|----------|--------|--------|--------|--------|--------|--|--|--|
|      | Body length - from HPS to hem  | 1/2       | 26 3/8  | 26 7/8   | 27 1/2 | 28 1/8 | 28 3/4 | 29 3/8 | 30 1/8 |  |  |  |
|      | Chest width - 1" below armhole, flat   | 1/2       | 19 1/4  | 20 1/4   | 21 1/4 | 22 3/4 | 24 1/4 | 25 3/4 | 27 1/4 |  |  |  |
|      | Waist width  | 1/2       | 18 1/4  | 19 1/4   | 20 1/4 | 21 3/4 | 23 1/4 | 24 3/4 | 26 3/4 |  |  |  |
|      | Hip POM from HPS   | 1/2       | 23 7/16 | 23 11/16 | 24     | 24 3/8 | 24 3/4 | 25 1/8 | 25 1/8 |  |  |  |
|      | Hip width  | 1/2       | 20      | 21       | 22     | 23 1/2 | 25     | 26 1/2 | 28 1/2 |  |  |  |
|      | Bottom width - flat  | 1/2       | 19 1/2  | 20 1/2   | 21 1/2 | 23     | 24 1/2 | 26     | 28     |  |  |  |
|      | Bottom width extended - flat   | 1/2       | 21 1/2  | 22 1/2   | 23 1/2 | 25     | 26 1/2 | 28     | 30     |  |  |  |
|      | Hem binding height   | 1/8       | 3/8     | 3/8      | 3/8    | 3/8    | 3/8    | 3/8    | 3/8    |  |  |  |
|      | Sleeve overarm - fr CB nk to shoulder point and to sleeve hem - 3 pt measure | 1/2       | 32 1/2  | 33 1/8   | 33 3/4 | 34 1/2 | 35 1/4 | 36     | 36 1/2 |  |  |  |
|      | Sleeve binding height  | 1/8       | 3/8     | 3/8      | 3/8    | 3/8    | 3/8    | 3/8    | 3/8    |  |  |  |
|      | Collar front height (top edge of collar to neck seam)                        | 1/8       | 3 1/4   | 3 1/4    | 3 1/4  | 3 1/4  | 3 1/4  | 3 1/4  | 3 1/4  |  |  |  |
|      | Collar back height (top edge of collar to neck seam)                         | 1/8       | 3 1/2   | 3 1/2    | 3 1/2  | 3 1/2  | 3 1/2  | 3 1/2  | 3 1/2  |  |  |  |
|      | Zipper flap width  | 1/8       | 1 1/4   | 1 1/4    | 1 1/4  | 1 1/4  | 1 1/4  | 1 1/4  | 1 1/4  |  |  |  |
|      | Lower pocket length (opening width)  |           | 7 1/4   | 7 1/4    | 7 1/2  | 7 1/2  | 7 3/4  | 8      | 8      |  |  |  |
|      | Lower pocket welt width  |           | 5/8     | 5/8      | 5/8    | 5/8    | 5/8    | 5/8    | 5/8    |  |  |  |
|      |  |           |         |          |        |        |        |        |        |  |  |  |
|      |  |           |         |          |        |        |        |        |        |  |  |  |
|      |  |           |         |          |        |        |        |        |        |  |  |  |