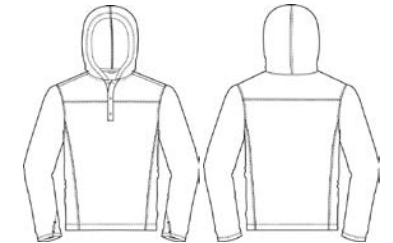


Trimark Sportswear Group		Spec Sheet		Proto#	M05-199-S19	Style#	18213
Program:	Elevate	Season:	Spring 2019	Status:	JPP	Vendor:	
Description:	Men's ASHLAND knit hoody			Created:	29-Mar-2018	Modified:	12-Dec-2018



FOR INTERNAL USE ONLY (do not hide/ remove)

CODE	POM DESCRIPTION	Tol (+/-)	S	M	L	XL	2XL	3XL	4XL	5XL
	Front body length - from HPS to CF hem @ shortest pt. (NOT including droptail)	1/2	28 3/4	29 1/4	30	31	32	33	34	35
	Back body length - from HPS to CB hem @ longest pt. (including droptail)	1/2	28 3/4	29 1/4	30	31	32	33	34	35
	Chest width - 1" below armhole, flat	1/2	20 3/4	22	23 1/2	25	26 1/2	28 1/2	30 1/2	32 1/2
	Bottom width - flat	1/2	20 1/4	21 1/2	23	24 1/2	26	28	30	32
	Hem height - hem edge to top row of stitch	1/8	1 1/4	1 1/4	1 1/4	1 1/4	1 1/4	1 1/4	1 1/4	1 1/4
	Sleeve overarm - fr CB nk to shoulder point and to sleeve hem - 3 pt measure	1/2	35 1/2	36 1/2	37 1/2	38 1/2	39 1/2	40 1/2	41 1/4	42
	Sleeve hem height - hem edge to top row of stitch	1/8	5/8	5/8	5/8	5/8	5/8	5/8	5/8	5/8
	Hood height at CF	1/8	15 1/4	15 3/4	15 3/4	15 3/4	15 3/4	15 3/4	16 1/4	16 1/4
	Hood width - at widest point	1/8	10 3/4	10 3/4	11	11	11 1/4	11 1/4	11 1/2	11 1/2
	CF placket length-from CF neck seam to bottom of placket opening includes stitch	1/8	7	7 1/4	7 1/4	7 3/8	7 1/2	7 5/8	7 3/4	7 7/8
	CF placket width - edge of placket to outside stitch	1/8	1	1	1	1	1	1	1	1
	Interior neck yoke Height at CB neck	1/8	4 1/4	4 1/4	4 1/4	4 1/4	4 1/4	4 1/4	4 1/4	4 1/4
	Interior neck yoke width 1/2" up from bottom edge	1/8	4 1/4	4 1/4	4 1/4	4 1/4	4 1/4	4 1/4	4 1/4	4 1/4
	Interior neck yoke width 1/2" below neck seam	1/8	5 3/4	5 3/4	5 3/4	5 3/4	5 3/4	5 3/4	5 3/4	5 3/4
	Front yoke placement - from HPS	1/8	6 11/16	6 13/16	7	7 3/16	7 3/8	7 9/16	7 3/4	7 15/16
	Back yoke placement - from HPS	1/8	5 11/16	5 13/16	6	6 3/16	6 3/8	6 9/16	6 3/4	6 15/16
	Forward shoulder		1	1	1	1	1	1	1	1