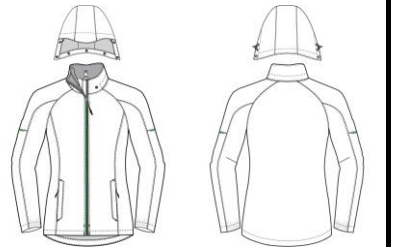


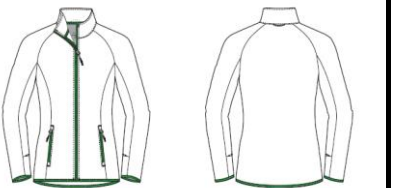
Trimark Sportswear Group				Spec Sheet				Proto# W04-250-F19		Style# 99307	
Program: Elevate				Season: Fall 2019				Status: Final		Vendor: x	
Description: Women's ARLINGTON 3-in-1 Jacket				Shell				Created: 10-Dec-2018		Modified: 17-Jun-2019	



Shell

CODE	POM DESCRIPTION	Tol (+/-)	XS	S	M	L	XL	2XL	3XL
	Front body length - from HPS to CF hem @ shortest pt. (NOT including droptail)	1/2	27	27 1/2	28	28 3/4	29 1/2	30 1/4	31
	Back body length - from HPS to CB hem @ longest pt. (including droptail)	1/2	29	29 1/2	30	30 3/4	31 1/2	32 1/4	33
	Chest width - 1" below armhole, flat	1/2	19 1/2	20 3/4	22	23 1/2	25	26 1/2	28
	Waist width	1/2	18 1/2	19 3/4	21	22 1/2	24	25 1/2	27 1/2
	Hip width	1/2	20 1/4	21 1/2	22 3/4	24 1/4	25 3/4	27 1/4	29 1/4
	Bottom width - flat	1/2	21	22 1/4	23 1/2	25	26 1/2	28	30
	Hem height - hem edge to top row of stitch	1/8	1 1/8	1 1/8	1 1/8	1 1/8	1 1/8	1 1/8	1 1/8
	Raglan sleeve overarm - fr CB nk to HPS and to sleeve hem - 3 pt measure	1/2	32 1/2	33	33 1/2	34 1/2	35 1/2	36 1/4	37
	Sleeve hem height - hem edge to top row of stitch	1/8	1 1/8	1 1/8	1 1/8	1 1/8	1 1/8	1 1/8	1 1/8
	Collar front height (top edge of collar to neck seam)	1/8	3 3/4	3 3/4	3 3/4	3 3/4	3 3/4	3 3/4	3 3/4
	Collar back height (top edge of collar to neck seam)	1/8	3 1/4	3 1/4	3 1/4	3 1/4	3 1/4	3 1/4	3 1/4
	Lower pockets length	0	7	7	7	7	7	7 1/4	7 1/4
	Zipper flap width	1/8	1 1/4	1 1/4	1 1/4	1 1/4	1 1/4	1 1/4	1 1/4
	Hood height - at HPS, crown top to shoulder	1/8	12	12 1/4	12 1/2	12 1/2	12 1/2	12 1/2	12 1/2
	Hood width - mid point	1/8	10 1/4	10 3/8	10 1/2	10 3/4	11	11 1/4	11 3/8
	Droptail - edge of CF hem to edge of CB hem	1/4	2	2	2	2	2	2	2
	Lower pockets welt		3/4	3/4	3/4	3/4	3/4	3/4	3/4
	Lower Sleeve - center panel width - provided by vendor		3 5/16	3 1/2	3 5/8	3 7/8	4 1/16	4 11/32	4 5/8
	Lower sleeve - center panel length - provided by vendor		16 3/4	16 15/16	17 1/8	17 5/8	18 3/16	18 9/16	18 15/16

Trimark Sportswear Group				Spec Sheet				Proto# W04-250-F19		Style# 99307	
Program: Elevate				Season: Fall 2019				Status: Final		Vendor: x	
Description: Women's ARLINGTON 3-in-1 Jacket				Liner				Created: 10-Dec-2018		Modified: 17-Jun-2019	



Liner

CODE	POM DESCRIPTION	Tol (+/-)	XS	S	M	L	XL	2XL	3XL
	Front body length - from HPS to CF hem @ shortest pt. (NOT including droptail)	1/2	26 1/2	26 1/2	26 1/2	26 1/2	26 1/2	26 1/2	26 1/2
	Back body length - from HPS to CB hem @ longest pt. (including droptail)	1/2	28	28	28	28	28	28	28
x	Forward shoulder	1/8	0	0	0	0	0	0	0
	Chest width - 1" below armhole, flat	1/2	20 1/2	20 1/2	20 1/2	20 1/2	20 1/2	20 1/2	20 1/2
	Waist width	1/2	19 1/2	19 1/2	19 1/2	19 1/2	19 1/2	19 1/2	19 1/2
	Hip width	1/2	21	21	21	21	21	21	21
	Bottom width - flat	1/2	20 1/2	20 1/2	20 1/2	20 1/2	20 1/2	20 1/2	20 1/2
	Bottom width extended - flat	1/2	21 1/2	21 1/2	21 1/2	21 1/2	21 1/2	21 1/2	21 1/2
	Hem height - hem edge to top row of stitch	1/8	3/8	3/8	3/8	3/8	3/8	3/8	3/8
	Raglan sleeve overarm - fr CB nk to HPS and to sleeve hem - 3 pt measure	1/2	33	33	33	33	33	33	33
	Sleeve hem height - hem edge to top row of stitch	1/8	3/8	3/8	3/8	3/8	3/8	3/8	3/8
	Collar front height (top edge of collar to neck seam)	1/8	3	3	3	3	3	3	3
	Collar back height (top edge of collar to neck seam)	1/8	2 1/2	2 1/2	2 1/2	2 1/2	2 1/2	2 1/2	2 1/2
	Lower pockets length (including zipper garage)	1/8	7 1/2	7 1/2	7 1/2	7 1/2	7 1/2	7 1/2	7 1/2
	Droptail - edge of CF hem to edge of CB hem	1/4	1 1/2	1 1/2	1 1/2	1 1/2	1 1/2	1 1/2	1 1/2
	Interior elastic thumb grab length - inner edge to edge		2	2	2	2	2	2	2